

BADASS DIVERS
COLLECTION 2017



S  **PRAS**
TEK

CONTENTS

UNDERSUIT GARMENTS AND ACCESSORIES.....	4
TECH BCDS.....	6
HARNESSES AND PLATES.....	8
BLADDERS.....	10
TRAVEL BCDS.....	12
SIDEMOUNT BCDS.....	14
REGULATORS.....	17
FINS.....	21
VALVES AND GAUGES.....	22
REELS AND ACCESSORIES.....	23



UNDERSUIT
GARMENTS AND
ACCESSORIES
4



TECH BCDS
6



HARNESSES
AND PLATES
8



BLADDERS
10



TRAVEL BCDS
12



SIDEMOUNT
BCDS
14



REGULATORS
17



FINS
21



VALVES AND
GAUGES
22



REELS AND
ACCESSORIES
23

852111 110 x 59 cm / 44 x 24"

BAG FOR DRY SUIT

This huge bag made of cordura will keep your car dry after your dives and will work perfectly as a changing mat as well!



TRILAMINATE DRY SUITS

110400 / 11040Y / 11040B / 110500

am1100 / am1200

TRILAMINATE DRY SUIT WITH FRONT ZIPPER

Our range of trilaminate dry suits includes models with a front zipper (in red, yellow and blue) and with a back zipper (fully in black). Front zipper allows easier wearing and self closure of the zipper, while the back zipper allows more freedom of movement. All models have Si tech valves and have a telescopic system that, coupled with an elastic crotch strap, allows great mobility.

WITH BACK ZIPPER



large thigh pocket



sleeve



braces buckles



waterproof stitches



large velcro pocket



back zipper protection



detail of the external zipper



detail of the booties



detail of the booties



detail of the sock



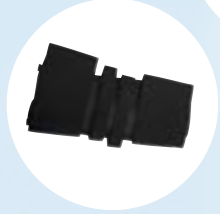
latex seal

code	zipper	colour	boots/sock	pockets	sizes	boot/socks sizes
am1100	back zipper	fully in black	boot	1 on the right	XS - XXL	6 up to13
am1200	back zipper	fully in black	socks	1 on the right	XS - XXL	6 up to13
110400	front zipper	red and black	boot	1 on the right	XS - XXL	6 up to13
11040Y	front zipper	yellow and black	boot	1 on the right	XS - XXL	6 up to13
11040B	front zipper	blue and black	boot	2 pockets	XS - XXL	6 up to13
110500	front zipper	red and black	socks	1 on the right	XS - XXL	6 up to13

806820 size: S/M
 806825 size: L/XL

CALF RETAINER FOR DRY SUITS

Prevent air from inflating the suit around your calfs.



AM1260 sizes: XXS - M

FLEECE UNDERGARMENT

Very warm and stretchy fleece (400g/m²) undergarment with two pullers on the front zipper allowing opening from both sides.



161200 standard 200gr sizes: S-XXXL
 161210 standard 400gr sizes: S-XXXL
 161220 thinsulate 200gr sizes: S-XXXL
 161230 thinsulate 400gr sizes: S-XXXL

SOCKS



110110 standard 200gr sizes: S-XXXL
 110120 standard 400gr sizes: S-XXXL
 110130 thinsulate 200gr sizes: S-XXXL
 110140 thinsulate 400gr sizes: S-XXXL

UNDERSUIT

Very warm material 200 and 400gr./m² with pockets on the waist and chest.



packing of the suit

two pullers on the front zipper



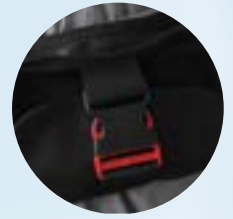
WEIGHT BELT FOR DRY SUITS



„Pull put“ quick release system, suitable for 16kgs total weight

NEW BELT FOR DRY SUITS

„Buckle“ quick release system, suitable for 16kgs total weight



806810

DRY SUIT HANGER

15350/5-13 size: 5 - 13

BOOTS FOR DRY SUITS

Designed to be worn over drysuit socks to provide superior ankle support.



90RB20 20 x 0,3 mm (1m) 90RB40 40 x 0,3 mm (1m)

RUBBER BAND



806830

DRY SUIT HANGER II

90GD61 size: unisize (pair) • latex

FLAT SOCK WITH SEAL



90GD51 size: S 90GD55 size: M 90GD56 size: L

NECK SEAL STANDARD



90GD54 size: unisize (pair)

90GD87 (pair)

5 FINGER GLOVES FOR RING CUFF SYSTEM 10



90GD8M (pair)

2 FINGER MITTS FOR RING CUFF SYSTEM



WRIST SEAL EXTRA LONG THICK / THIN



90GD68 size: L (pair) 90GD82 size: M (pair)

WRIST SEAL STANDARD CONICAL



90GD53 size: M (pair)
90GD52 size: L (pair)

WRIST SEAL STANDARD BOTTLE



90GD58 size: M

HOOD



90GD69 size: L (pair) 90GD83 size: M (pair)

ANKLE SEAL CONICAL



220000 unisize • cordura 1500 • nylon 290 • colour: ■

BASIC TECH 30 L / 66 LB

221000 unisize • cordura 1500 • nylon 290 • colour: ■

BASIC TECH 30 + 30 L / 66 LB + 66 LB



222000 unisize • cordura 1500 • nylon 290 • colour: ■

COMFORT TECH 30 L / 66 LB

223000 unisize • cordura 1500 • nylon 290 • colour: ■

COMFORT TECH 30 + 30 L / 66 LB + 66 LB



Basic Tech and Comfort Tech are high volume BCDs designed for advanced technical divers. Basic Tech consists of a stainless steel back plate with webbing harness, shoulder neoprene padding, crotch strap and pockets for second mask or other accessories. In Comfort Tech the back plate is hidden inside a pocket and also in this case we have a crotch strap, shoulder padding and pockets for second mask and other accessories. For both models there is the possibility to choose among single or double bladders of 30l/66lbs each. The external cover of the bladder and the pockets are in Cordura 1500. Many stainless steel D-Rings for equipment fitting. 12 surgical tubes are wrapped around the bladder, in order to correct the balancing, reduce water resistance and speed up deflation.



230211

BLADDER FOR COMFORT/BASIC TECH

With two inflators (600mm item #901015 and 400mm item #901020) and two inside bladders of 30 l / 66 lb each.



S.S. backplate hidden in the pocket



External bladder can be in red as well!

230210

BLADDER FOR COMFORT/BASIC TECH

With one 600mm inflator (item #901015) and one inside bladder of 30 l / 66 lb.



Available also with slots for the cylinders straps

230200

HARNESS FOR COMFORT TECH



230100 14 x 22 cm / 5,5 x 8,5"

ADDITIONAL POCKET



230000

HARNESS BASIC TECH

Without backplate



224001 size: one for all 25 kg / 55 lb • Kevlar • Nylon 290 • colour: ■

GRANAT TECH KEVLAR

Extra light BC ideal for travellers. Can be easily disassembled for easier packing. High volume bladder • The outer bladder can be in Kevlar or in Cordura 1000 • The pockets are in Cordura 1000 • Padded hard back pack in lightweight alloy (black or natural anodized) • Two dump valves • 6 big D rings in lightweight alloy • Adjustable harness fixed to the back pack • Chest strap system with buckle • Double fastening tank band • Power inflator with chrome-plated brass buttons • Lifting capacity: 25 kg / 55 lb • Included utility pouch.

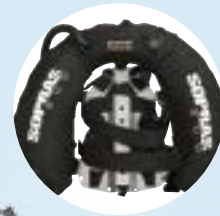
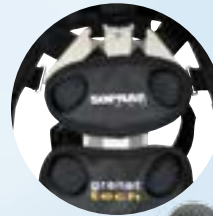
Bladder in Kevlar and black anodized aluminium components.



Bladder in Cordura 1000 and anodized aluminium components

208000 size: one for all • 25 kg / 55 lb • Cordura 1000 • Nylon 290 • colour: ■

GRANAT - WING



Aluminium back pack with padded cover

240044 + 240170 size: one for all 25 kg / 55 lb • Kevlar • Nylon 290 • colour: ■

ULTRA LIGHT HARD 12L KEVLAR COMPLETE BCD

Ultra light HARD 12L Kevlar is the combination of a harness mounted on an ultralight black anodized plate and a small very streamlined donut suitable for single tank. Polstering on the plate and shoulder padding ensure maximum comfort. The harness strap system is adjustable while wearing the BCD. The crotch strap is in 25mm webbing and coupled with a chest buckle ensure perfect fit. Quick release weight pockets on the waist strap. All the rings and the waist buckle are in black anodized aluminium for minimum weight.



240170 size: one for all 25 kg / 55 lb • Kevlar • Nylon 290 • colour: ■

HARNESS FOR ULTRA LIGHT KEVLAR

Includes 1 tank strap with cam buckle one with velcro, soft single tank adapter, quick release waist weight pockets system, ultralight black anodized aluminium plate covered with a comfortable polstering, shoulder padding, crotch strap, chest buckle

240044 size: one for all 25 kg / 55 lb • Kevlar • Nylon 290 • colour: ■

ULTRA LIGHT 12L DONUT KEVLAR

240130 on S.S. plate
240131 on alu plate

HARNESS COMFORT DETACHABLE

Quick release buckle on left shoulder for easier wearing with possibility to adjust shoulder straps length. Available both on s.s. or alu plate. Inclusive of two weight pockets and chest buckle. Padded shoulder covers.



240150 on S.S. plate
240151 on alu plate

HARNESS DELUX ADJ

Adjustable harness thanks to the s.s. buckle system with shoulder protection, weight pockets, buoy pockets, 4mm crotch strap for maximum comfort. S.S. rings for additional equipment. Available both on s.s. and alu plate.

240160 SS plate
240161 alu plate

HARNESS COOL

Adjustable harness, hard webbing, weight pockets and single tank adapter available in stainless steel or aluminium.



240100 standard strap on S.S. plate
240101 standard strap on alu plate
240110 hard strap on S.S. plate
240111 hard strap on alu plate

HARNESS DIR

The DIR harness can be with harder strap or standard strap on both s.s. or alu plate.



240120 on S.S. plate
240121 on alu plate

HARNESS ADJ

Very basic adjustable harness thanks to the s.s. buckle system. Available both on s.s. and alu plate.



240300

CROTCH STRAP 25mm



240305

CROTCH STRAP 40mm



240310

CROTCH STRAP 50mm



240335

SHOULDER COVERS



23031K/B/R

ALU BACK PLATE



240330 11
240332 21

901410 for hard plate
901411 for soft plate

ARGON TANK HOLDER



SOFT SINGLE TANK ADAPTER



240315

WEIGHT POCKETS



Can contain up to 5kgs each.
Come in pairs.

240313 standard 240314 with s.s. D ring

WEIGHT POCKETS NEW

Can contain up to 5kgs each. Screws to attach
to the plate included. Come in pairs.



230301 tank adapter
230300 complete
230302 front plate

S.S. BACKPLATE



230316 black
230317 natural

230320 black
230321 natural

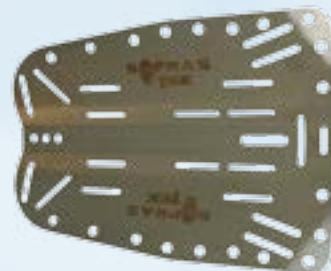
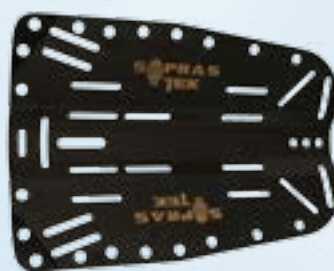
BACK PLATE SS

BACK PLATE ALU

240350 suitable on plates 230316, 230317, 230320, 230321
240351 suitable on plates 230302

POCKET FOR BUOY

Works also as back polstering
covering your backplate. To
be attached with BP screws.



240320 for 340mm Soprasub inflator
240322 for 400mm Soprasub inflator
240324 for 600mm Soprasub inflator

INFLATOR COVER



219.97

BP BLACK ANODIZED

Black anodized ultralight
back plate in aluminium.



240092

DONUT XL 20L BK



240093

DONUT XL 20L RD



240095

DONUT XL 20L KEVLAR



High volume bladder (20litres) with an inflator of 400 mm / 16" (on request 475 mm / 19"); available in red, black Cordura or fully in Kevlar. Possibility to have on request rubber slots for cylinder straps (pictures in red and black) or without (see picture of the Kevlar version) to be used exclusively with a single tank adapter. Suitable up to double 12l tank.



240094

DONUT SM 14L KEVLAR



240091

DONUT SM 14L RD



240090

DONUT SM 14L BK



Low volume bladder (14litres) with an inflator of 400 mm / 16"; available in red, black Cordura or fully in Kevlar. Possibility to have on request rubber slots for cylinder straps (pictures in red and black) or without (see picture of the Kevlar version) to be used exclusively with a single tank adapter. Suitable up to 12l tank.

Donut X-Tech bladders are available in sizes 20litres (for twin 12L.) or 23 litres (for twin 15L.) and exist in black or red Cordura as well as Kevlar.
 A valve is positioned on the front low left side and the inflator of 475mm / 19" is positioned centrally.

240050

DONUT X-TECH 20L

240056

DONUT X-TECH 23L



240052

DONUT X-TECH 20L RED

240055

DONUT X-TECH 23L RED



rubber reinforcement
around the OPR valves

240053

DONUT X-TECH 20L KEVLAR

240057

DONUT X-TECH 23L KEVLAR



TEKNO DONUT 14L LIGHT

Low volume bladder (14litres) with an inflator of 400 mm / 16"; available in red, pink or black Cordura or fully in Kevlar. To be used with 12l tank

240060
BLACK



240061
RED



240063
KEVLAR / YELLOW



240062
KEVLAR



240064
PINK



Kevlar on the back and yellow cordura on the front

240042 + 240043 size: one for all 25 kg / 55 lb • Cordura 100 • Nylon 290 • colour:

ULTRA LIGHT SOFT 12L COMPLETE BCD

Ultra light SOFT 12l is the combination of a soft harness and a small very streamlined donut suitable for single tank. Between the soft plate and the polstering there's a mini backplate in stainless steel (item # 230322). Two straps equipped with a soft and removable single tank adapter ensure perfect stability of the cylinder. The harness strap system is adjustable while wearing the BCD. Plastic release buckle on the left shoulder for easier unwearing. The crotch strap is in 50mm soft and comfortable webbing and coupled with a chest buckle ensure perfect fit. Removable weight pockets on the waist strap as well as on one cylinder strap allow flexible buoyancy control. All the rings and the waist buckle are in black anodized aluminium for minimum weight.

240042

240043

ULTRA LIGHT 12L DONUT

SOFT HARNESS FOR ULTRA LIGHT



cylinder straps with weight pocket and tank stabilizer

COMPACT LITE 14L

Super light and extremely streamlined travel bcd for rectec diving in red, pink, black cordura, kevlar/yellow or fully in Kevlar; this bcd weighs 2,5kgs and has a bladder of 14litres volume. Aluminium D rings. Bungy system on the plastic shoulder buckles will increase the safety of your dives. Side pockets are attached to the waist strap. Comes with a cam buckle cylinder strap plus an additional simple velcro cylinder strap and with a single tank stabilizer with 2 weight pockets each suitable for up to 2,5kgs. Can be used with single 12l cylinder. Inflator of 400 mm / 16". Available with quick adjust waist plastic buckle or aluminium buckle



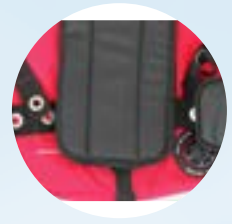
the shoulder buckles - are secured by a bungee that make the wearing even easier



cylinder strap with rubber coating on the inside



shoulder strap connection to the waist belt adjustable in two positions (available on request)



cylinder straps with weight pocket and tank stabilizer



how to secure the tank with the upper 25mm webbing around the cylinder neck and valve



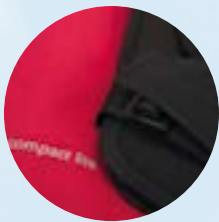
fitting on a 10 litres tank



fitting on a tank with 203 mm diameter

240070

COMPACT LITE 14L RED



240071

COMPACT LITE 14L BLACK



240069

COMPACT LITE 14L KEVLAR



240067

COMPACT LITE 14L PINK



240068

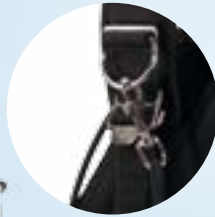
COMPACT LITE 14L KEVLAR/YELLOW



This sidemount BCD has a volume of 15l, has 3 velcro weight pockets hidden behind the back polstering, 1 zipper pocket on the highest part of the bladder (just behind the neck), plus two additional pockets on the waist belt. This makes buoyancy adjustments very easy and flexible. The harness exists in two different versions: one can be adjusted only through the waist belt and one has an easy quick adjust buckle on the shoulder level. Bungee for attaching tanks can be easily adjusted in length. It comes in 4 different versions of the bladder (Red, black cordura, pink or Kevlar)

SIDEMOUNT ADJ

Adjustable harness



adjustable shoulder strap



standard shoulder strap DIR style



zipper weight pocket on the top of the bladder



valve on the lower end of the bladder on special request



bungee system easily adjustable



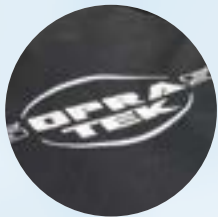
3 velcro weight pockets for 2kgs each

240073

SIDEMOUNT ADJ BLACK

240076

SIDEMOUNT BLACK

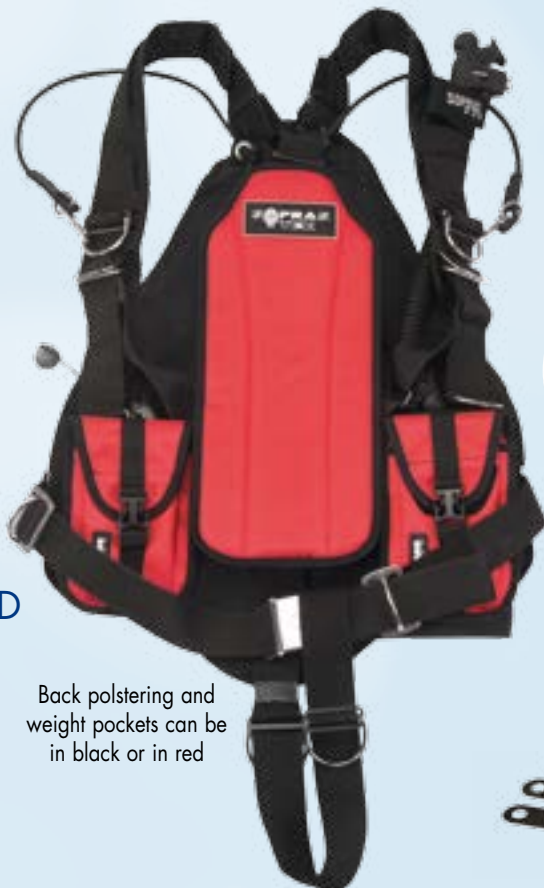


240072

SIDEMOUNT ADJ RED

240075

SIDEMOUNT RED



Back polstering and weight pockets can be in black or in red



240080

SIDEMOUNT ADJ PINK

240081

SIDEMOUNT PINK

240074

SIDEMOUNT ADJ KEVLAR

240077

SIDEMOUNT KEVLAR



SIDEMOUNT COMPONENT

240362

lower stainless steel rails/rings for hooking stage/side cylinders

2.97 3.97



SIDEBACK 16L

sidemount setup with no cylinders straps and bungees

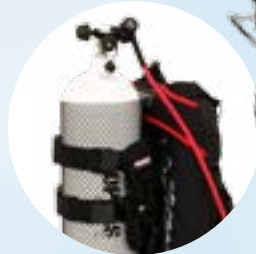
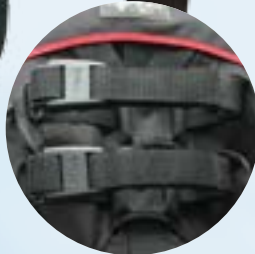
SIDEBACK DETACH 16L



standard harness and backmount set up



4 velcro pockets (2kgs each) behind the back polstering



Two cylinder straps with weight pockets and tank stabilizer



This sidemount BCD has an oval bladder and therefore can be used also as a backmount BCD by installing tank straps and switching the position of the inflator with the valve. The volume of the bladder is 16litres and the inflator is 400mm long. The harness comes in two versions: with a plastic buckle on the shoulder level (DETACH version) for easy unwearing or with no shoulder buckle (DIR style). Four weight pockets (each can hold up to 2kgs) behind the back polstering plus two (of 3kgs each) on the cylinder strap are included in this set up.

Dividing with 3 cylinders is possible!

TANK STABILIZER WITH WEIGHT POCKETS

suitable for hard backplate



TANK STABILIZER WITH WEIGHT POCKETS

suitable for soft backplate



TANK STABILIZER

suitable for hard backplate



804005

HEAVY DUTY S.S. GLIDER SERRATED WITH D-RING



804001 serrated
804003 non serrated
804004 non serrated 6mm

S.S. TRI-GLIDER



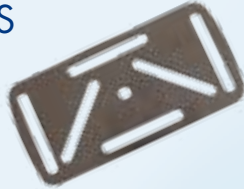
802300 90 mm / 3.2"

ERGONOMICAL BRASS SNAP LINK



230322

MINI BACKPLATE STAINLESS



804002 non serrated, natural
804026 non serrated, black
804032 non serrated, red

ANODIZED ALU TRI-GLIDERS 50mm



801850 32x11x4mm

QUICK LINK



801851 39x13x5mm

QUICK LINK



802200 90 mm / 3.2"

DOUBLE BRONZE SPRING - CLIP



SCREWS FOR FIXING TO THE BACKPLATE



230101

WAIST WEIGHT POCKETS



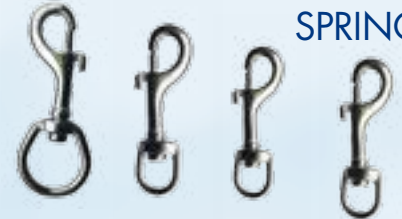
802250 110 mm / 4.5"

BRASS SPRING



801650 98mm/3,9" 801653 80mm/3,2"
801652 75mm/3,0" 801655 87mm/3,5"

SPRING



252.97

S.S. TRI-GLIDER NON SERRATED WITH CURVED D RING



BACK POLSTERING

For Sidemount and Compact lite BCDs

134.97

SPRING



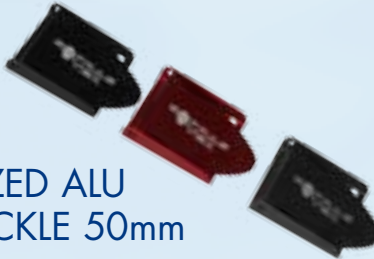
801660 119 mm / 3.8"
801665 103 mm / 3.1"

253.97

S.S. 50mm RECTANGULAR



ANODIZED ALU BELT BUCKLE 50mm

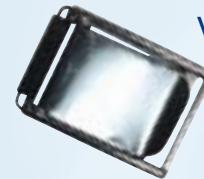


804510 natural
804511 black
804512 red

804520

SPRING LOADED WEIGHT BUCKLE

Adds depth compensation to any weight belt. Rust-free 304 stainless steel.



804010 straight
804011 curved

S.S. 50mm D RINGS



D-RINGS



804012 S.S. 40 mm
804013 S.S. 25 mm
804023 Alu 25 mm

80450T

STAINLESS STEEL BELT BUCKLE DELUXE



804020 straight, natural
804024 straight, black
804030 straight, red

ANODIZED ALU 50mm D RINGS



ANODIZED ALU CURVED 50mm D RINGS



804500

STAINLESS STEEL BUCKLE



900320 50 mm - stainless steel
900322 40 mm - stainless steel
900324 50 mm - aluminium

CAM BUCKLE



1C000244

OPR VALVE FOR BCDs



am6052 50 mm - stainless steel

STAINLESS STEEL BUCKLE

620031

OCTOPUS 2020 DIAMOND

Unbalanced 2nd stage with yellow cover and 90cm yellow mesh hose



604560

OCTOPUS 2020

Unbalanced 2nd stage with yellow cover, 90cm yellow mesh hose & black hose sleeve



631312

2.ST 2060 SATURNO BAL.ADJ RED

Ovally shaped adjustable balanced second stage with dive/prediver knob and 72cm red mesh hose. Can be left or right mounted. Version in red.



631311

2.ST 2060 SATURNO BAL.ADJ PINK

Ovally shaped adjustable balanced second stage with dive/prediver knob and 72cm pink mesh hose. Can be left or right mounted. Version in pink for ladies.



631313

2.ST 2010 VENERE BAL.ADJ

Adjustable balanced second stage with dive/prediver knob and 72cm black mesh hose.



631314

2.ST 2010 VENERE DIAMOND BAL.ADJ

Adjustable balanced second stage with dive/prediver knob and 72cm grey mesh hose.



631315

2.ST 2020 ANDROMEDA UNBAL.

Unbalanced 2nd stage with 72cm black mesh hose



MERCURIO

Balanced diaphragm 1st stage DIN or YOKE connection with 2HP ports on corpus and 5LP ports on a 360 degrees turning turret. All models have an ice chamber and viton o-rings for Nitrox mixes. Available with a satin chrome or durable black surface finishing.

605232 DIN satin chrome Ice



605233 YOKE satin chrome Ice



605234 DIN durable black Ice



605235 YOKE durable black Ice



GIOVE

Balanced diaphragm 1st stage DIN or YOKE connection with 2HP and 5LP ports. All models have an ice chamber and viton o-rings for Nitrox mixes. Available with a satin chrome or durable black surface finishing.

605236 DIN satin chrome Ice



605237 YOKE satin chrome Ice



605238 DIN durable black Ice



605239 YOKE durable black Ice



PLUTONE

Balanced diaphragm 1st stage DIN or YOKE connection with 2HP ports on corpus and 5LP ports.
Available with bright chrome or durable black surface finishing and with or without ICE chamber/viton rings

605240 DIN durable black ice version



605241 YOKE durable black ice version



605242 DIN durable black standard version



605243 YOKE durable black standard version



The special angles of the ports make PLUTONE ideal for twin sets



605244 DIN bright chrome Ice version



605245 YOKE bright chrome ice version



605246 DIN bright chrome standard version



605247 YOKE bright chrome standard version



all our membrane first stages have a removable 5th port, which makes them ideal for Tech diving



MINERVA

Piston balanced first stage DIN or YOKE connection with 2HP ports on corpus and 5LP ports on a 360 degrees turning turret and satin chrome surface finishing

605202 DIN

605203 YOKE



DIANA

Unbalanced piston DIN or YOKE connection with 4PL and 1HP ports and durable black surface finishing

605230 DIN

605231 YOKE



602350

OXYGEN DECO REGULATOR

Unbalanced piston regulator, Viton O-rings, 40EAN, green plastic parts, 40" green nylon mesh hose.

900531 20cm/8"

BRAIDED BCD HOSE FOR SIDEMOUNT



501310 300 bar • diam. 52 mm / 2,1"
501311 5000PSI • diam. 52 mm / 2,1"
501312 450 bar oxygen • diam. 52 mm / 2,1"

TEK PRESSURE GAUGE

Completely made of metal, very robust, ideal for tek diving. Tempered glass in bar or PSI.

900405 60cm/24"
900407 18cm/7"
900408 15cm/6"

BRAIDED HP HOSE



900542 150 cm / 60" 900543 210 cm / 82" 900546 200cm / 80"

REGULATOR HOSE BRAIDED



41630/M/L/X size: M, L, XL • rubber strap • colour: ■

41631/M size: M • strap fin • rubber strap • colour: ■

416320 size: L, XL • SS spring strap • colour: ■

All our rubber fins are negatively buoyant, ideal for dry suit diving. Thanks to the shape allow a perfect frog and back kick. Available in black, yellow and white. They can have a S.S. spring strap or a simple rubber one.

RUBBER FINS I



41631

41630

416320



416680 size: L, XL, XXL • SS spring strap • colour: ■

416681 size: XL • SS spring strap • colour: ■

RUBBER FINS IV

416670 size: L, XL • quick release SS spring strap • colour: ■

416671 size: XL • quick release SS spring strap • colour: ■

RUBBER FINS III



416670



416680



416671

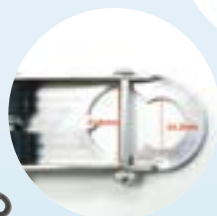


416681



41602S/M/L/XL size: S, M, L, XL • stainless steel

S.S. BUCKLE FOR FINS



41606S/M/L/XL size: S, M, L, XL • stainless steel

S.S. SPRING STRAP



Suitable on our rubber fins I with code 41630/M,L,XL.

VALVES



741300

741303



741303

741302



741300 741301/171 for double diam. 171 mm
 741301/203 for double diam. 203 mm 741302

MANIFOLD



740232 203mm / 232bar
 741232 171mm / 232bar
 742300 203mm / 300bar
 743300 171mm / 300bar

MANIFOLD

Twin tank valve with separation valve

Available also with thread 3/4 NPSM.



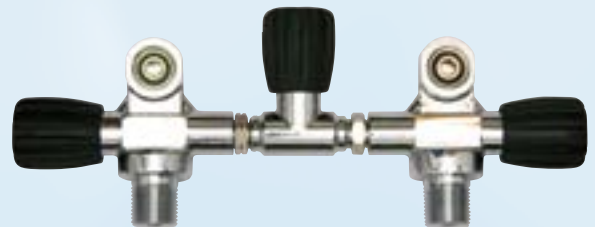
742230 for double diam. 203 mm
 742231 for double diam. 171 mm

MANIFOLD SCREW



742232 for double diam. 140 mm

MANIFOLD SCREW



740202 741301/171 for double diam. 171 mm
 741301/203 for double diam. 203 mm 740201

MANIFOLD CONICAL THREAD



804910 50 m / 165 ft

COMPACT ALUMINIUM REEL

with spring, holder and possibility to block (50 meters).



- 761202 165 - 210 mm / 6 1/2" - 8"
- 761203 156 - 178 mm / 6 1/4" - 7"
- 761204 130 - 152 mm / 5 1/8" - 6"

STAGE BOTTLE RIGGING

This simple but elegant set provides a reliable and streamlined solution for stage/deco bottles. Heavy duty stainless steel pipe band is enclosed in a dedicated nylon sleeve to protect the cylinder's exterior finishing. Three different sizes available.



250 m / 833ft

805021 100 m / 330 ft

805022 250 m / 833 ft

BIG REELS IN STAINLESS STEEL AND ALUMINIUM

Line not included.



100 m / 330ft



805014 15,24 m / 50 ft

805015 30,48 m / 100 ft

805016 45,72 m / 150 ft

SUS FINGER SPOOL W/SS SNAP HOOK



240317

LINE ARROW GLOW



240318

COOKIE GLOW



1C000245 400 mm / 16"

1C000246 475 mm / 19"

INFLATOR



901050

SILICONE HOSE



806550 colour: ■

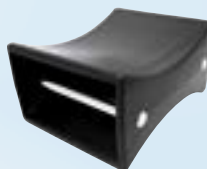
80655K colour: ■

REGULATOR NECKLACE



760830

TANK SPACER FOR TWIN SET



Universal support for double tanks quick fixing.

760101 171 mm / 6,75" • 50 mm / 2"

760111 203 mm / 6,75" • 50 mm / 2"

760121 140 mm / 6,75" • 50 mm / 2"

STAINLESS STEEL TWIN TANK BANDS

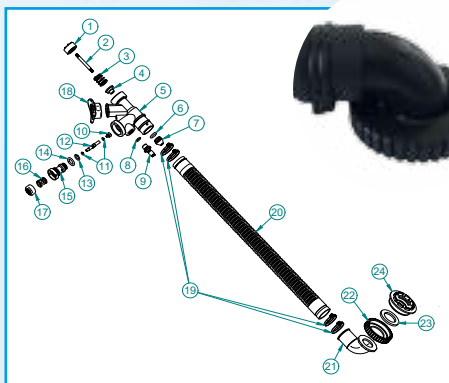


760831

RUBBER PAD-TANK PROTECTOR

760200 171 + 171 mm / 6,75" + 6,75"

DOUBLE TANK BOOT



901015 600 mm / 24"

901020 400 mm / 16"

INFLATOR POWER

f **soprastek**
www.soprastek.com

Diveproduction s.r.o.
Cerveny Ujezd 267, 273 51 Unhost
Czech Republic
diving@sopras.cz
Tel.: +420 312 699 790
Fax.: +420 312 699 792



f **soprassub**
www.soprassub.com



f **soprasapnea**
www.soprasapnea.com

Webshop for USA and Canada **www.soprassubusa.com**